



# 信息简报

【2021】第 8 期 (总第 146 期)

清华大学环境学院编

2021年10月

- 1.
- 2.
- 3.
- 4.
- 5.

" "

	2021	10	15	15	52
103					10 20

	1918	12	31		1942
				1949	

1951

Sigma Xi

Consoer Townsend

and Associates

1954

1955

1956

8

1995

1992

2005 87

2017

34

13

20 90

20

2012

2018

/ /



2021 10 12 15 37

88 10 14

1933 7 29

1953

1961

1999 10

2018

-

31 26

1988

30 2 3

2018

2035

200

/

/



10 13

205

5 16

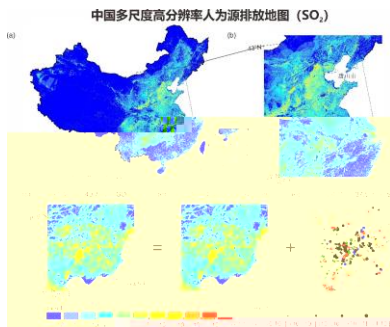
/

10 6



10 21 27

PM<sub>2.5</sub>



for China

MEIC

Multi-resolution Emission Inventory

MEIC

MEIC

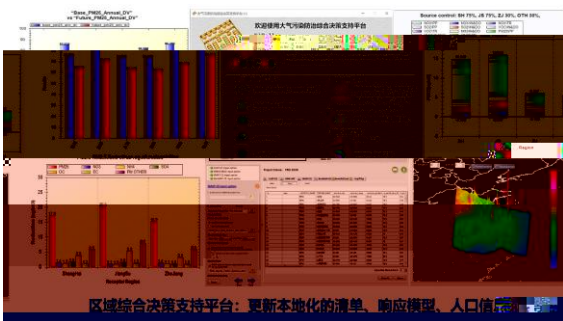
30

IPCC



2021

PM<sub>2.5</sub>



O<sub>3</sub>

O<sub>3</sub>

PM<sub>2.5</sub>

PM<sub>2.5</sub>

PM<sub>2.5</sub> O<sub>3</sub>

2020



16

20

32

57

15

/

GB/T 40510-2021  
25MPa

GB/T 40506-2021

40

/





10 18

21

8

2014

2020 4

18

/

VoySEIM-GTEMS



GTEMS-VoySEIM

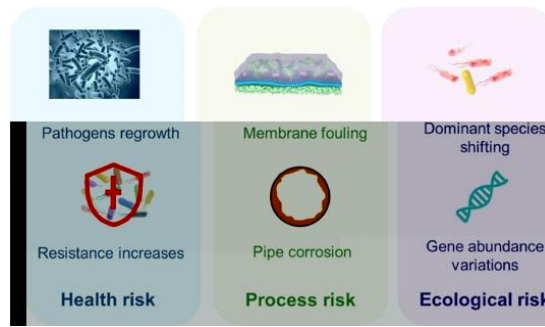
10 7  
emissions

Nature Climate Change

Trade-linked shipping CO<sub>2</sub>

<https://www.nature.com/articles/s41558-021-01176-6>

/



10 50

DRB

2020

10

-Proteobacteria  
Firmicutes  
Firmicutes  
Cyanobacteria

Bacteroidetes  
-Proteobacteria  
Actinobacteria  
Pseudomonas  
Ancinetobacter

Risks, characteristics, and control strategies of disinfection-residual-bacteria (DRB) from the perspective of microbial community structure

*Water Research*

<https://doi.org/10.1016/j.watres.2021.117606> /

+

+

2020		99.2PWh		13		2060
146.1PWh				2021	78.6%	
				2023		
					+	
					+	
		+			+	
2030	2060	5.2PWh	7.2PWh	+		
				2030	2060	0.25 /

0.12 /

power and storage as cost-competitive and grid-  
electricity system 10 12

Combined solar  
rbon-neutral

PNAS

Michael B. McElroy

Chris P. Nielsen

-INDITEX

<https://www.pnas.org/content/118/42/e2103471118> /



10 20 2021

15000

6

20

2019

/

10 21



IPCC

/



10 29

2021

20

2021



Mindy Zhang

2060

11

/



10 20

11

/

10 28

311

/

2022



10 6

2022

100

2022

/

1989

2002

2010

2021

2011

PM<sub>2.5</sub>

MOOC

2 5

/

10 25

205

20



1

/

/



10 22 25  
649

Engineering

*Frontiers of Environmental Science*

2

8

22

228

134

82





2035

2030

82

10 15

103

9 10

1.

90

2.

60

100

3.

2017

99

34



$\hat{A}^5 \sim -Lu/n \hat{O} \hat{A} f. Le# * \hat{A} \times f,, -p \hat{}$

Z





2016

2018

3

2019

9

010-62771528

010-62785687

soexc@tsinghua.edu.cn

<http://www.env.tsinghua.edu.cn>